



SOUNDWELL®

<http://soundwell-cn.com>

RB16 Series POTENTIOMETER



企业微信，扫码有惊喜



升威官网，发现更多产品

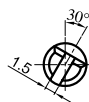
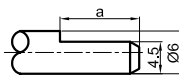
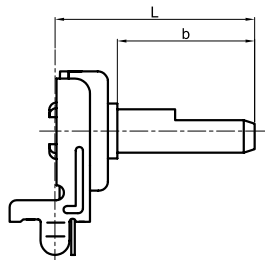
MODEL 品名

DIMENSIONS 尺寸

UNIT:mm

RB1601 SERIES INSULATED SHAFT TYPE

V-TYPE
(VERTICAL)

SHAFT SHOWN IN FULL
C. C. W. POSITION

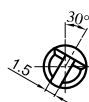
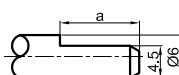
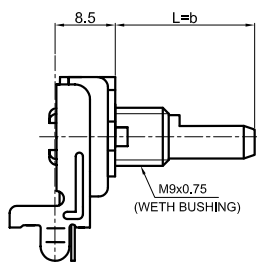
FB-TYPE

L	18.5	22.5	23.5	28.5	33.5	38.5
b	10	14	15	20	25	30
a	7	10	7	12	12	12

KQ-TYPE

L	18.5	23.5	28.5	33.5	38.5
b	10	15	20	25	30
a	7	8	7	12	12

V-TYPE
(VERTICAL)

SHAFT SHOWN IN FULL
C. C. W. POSITION

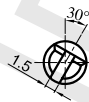
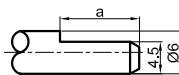
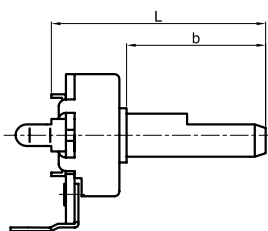
FB-TYPE

L=b	10	14	15	20	25	30
a	7	10	7	12	12	12

KQ-TYPE

L=b	10	15	20	25	30
a	7	8	7	12	12

H-TYPE
(HORIZONTAL)

SHAFT SHOWN IN FULL
C. C. W. POSITION

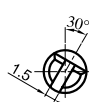
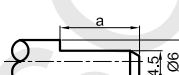
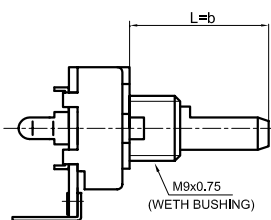
FB-TYPE

L	20	24	25	30	35	40
b	10	14	15	20	25	30
a	7	10	7	12	12	12

KQ-TYPE

L	20	25	30	35	40
b	10	15	20	25	30
a	7	8	7	12	12

H-TYPE
(HORIZONTAL)

SHAFT SHOWN IN FULL
C. C. W. POSITION

FB-TYPE

L=b	10	14	15	20	25	30
a	7	10	7	12	12	12

KQ-TYPE

L=b	10	15	20	25	30
a	7	8	7	12	12

Note: In this catalog, if some parameters or drawings are different from the "Approval sheet", it's subject to the "Approval sheet".

注明: 如说明书与承认书规格参数、图面有异, 均以承认书为准。